



KOIKE's CNC Controller [D430]

CNC Specification	
Model	D430
LCD Monitor:	10.4inch, 800*480
CPU	64MB
OS	FLMC - F-2300T
Interpolation Function	2 Axis Control
Input Medium	USB Flash Memory
Input Code	EIA
Input Format	Based on EIA
Program Unit	0.001mm
Maximum Input Value	±99999.999mm
Minimum Output Unit	0.001mm
Command of Feed Speed	Manual data input on CNC screen Commanded by F code
Spare Memory Available	256MB electronic hard disk
Max Lines of Program Code	150,000 lines
Max Size of Single Code File	4MB
Preinstalled Standard Pattern (Shape) Librally	47
Working Temperature	0~+45°C
Relative Humidity	0~95%



Plasma Option

Conventional Air Plasma
(with NO High Frequency-type)
(ie. Powermax-85, -105, or -125)



KOIKE SANSO KOGYO CO.,LTD. (International Division)

1-9-3 Onodai, Midori-Ku, Chiba-City,
Chiba 267-0056 Japan
Tel: +81-(0)43-239-2130
Fax: +81-(0)43-239-2129
<http://www.koikeox.co.jp>

KOIKE ENGINEERING TANGSHAN CO.,LTD.

Xi Chang Road East side
New&Hi-tech Development Zone,
Tang Shan City,
Hebei Province, 063020, P.R.China
Tel: +86-315-317-3838 & 3858
Fax: +86-315-317-3222
<http://www.koike.cn>

KOIKE Cutting & Welding (INDIA) PVT. LTD.

No.679/2/1 Kuruli, Chakan,
Taluka KhedOff
Chakan-Alandi Road, Pune 41050,
Maharashtra, India
Tel: +91-2135304050
Fzx: +91-2135304077
<http://www.koike-india.com/>

DISTRIBUTOR

Specifications shown here are subject to change without notice.
Issued in Japan, March 2016.



Total system supplier of cutting and welding.
KOIKE INTERNATIONAL GROUP

KOIKE

New Lineup of Economical & Entry-level KOIKE Gantry-type CNC Gas/Plasma Cutting Machines

*Most suitable to everybody for the low initial cost
in gantry-type CNC cutting machine to automate cutting application.*

MAXIGRAPH-S



Feature

1. Simple CNC on rigid gantry structure.
2. High precision Dual side rack/pinion drive.
3. Max. Rail span: 4,000 mm
4. Max. 4 sets of Oxy-fuel cutting torches.
5. Air Plasma cutting system is available (Max. 1 Plasma + 3 Gas Torch).
6. Durable 22kg/m Longitudinal Rail



FLEXIGRAPH-Smart



Feature

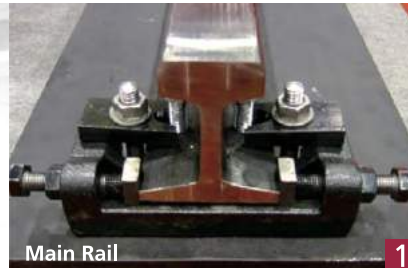
1. Simple CNC on simple gantry structure.
2. High precision Dual side rack/ pinion drive.
3. Max. Rail span: 4,000 mm
4. Max. 2 sets of Oxy-fuel cutting torches.
5. Air Plasma cutting system is available (Max. 1 Plasma + 1 Gas Torch).
6. T-type Longitudinal Rail



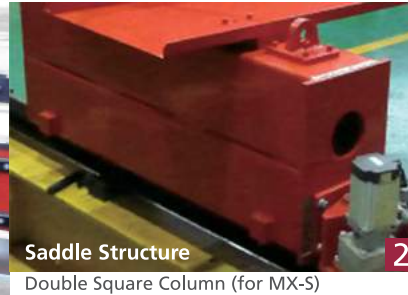
03CS201603

Since 1918, KOIKE has been growing up with our customers in heavy steel plate Cutting and Welding industries. For the last 98 years, KOIKE's advanced and high quality products are being appreciated throughout the world. **MAXIGRAPH-S** and **FLEXIGRAPH-Smart** are the ultimate model of Entry-level CNC Gas/ Plasma Cutting Machine. KOIKE developed with its 98 years'of cutting experience and exquisite selection of necessary function. **FLEXIGRAPH-Smart** would surely help you improve your productivity by automating cutting application with most simple machine components and intelligent CNC system at excellent cost-performance. **MAXIGRAPH-S** would expand your work range and improve efficiency with variety of optional features available. KOIKE has your cutting and welding solution.

MAXIGRAPH-S



Main Rail 1
22kg/m + CP-5 Rack (for MX-S)



Saddle Structure 2
Double Square Column (for MX-S)

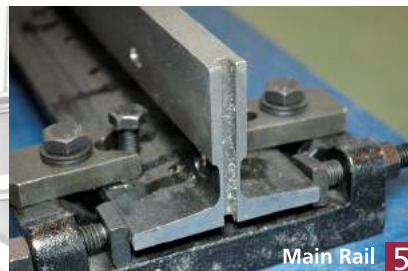


Sub-carriage Connection to Main Carriage 3
Steel Belt (for MX-S)



Motorized Torch Riser 4
KET HDH-type (for MX-S)

FLEXIGRAPH-Smart



Main Rail 5
T-type + CP-5 Rack (for FX-Smart)



Saddle Structure 6
Compact Trapezoid Frame (for FX-Smart)



Sub-carriage Connection to Main Carriage 7
Steel Bar (for FX-Smart)



Motorized Torch Riser 8
Light-type (for FX-Smart)

Improve your cutting productivity at excellent cost-performance (high cost-effectiveness ratio).

○: Included as standard, OP: Available as optional item, X: Not Available/ Not Applicable

Comparison Table (MX-S vs. FX-Smart)			
Item	Model	MAXIGRAPH-S	FLEXIGRAPH-Smart
Machine Base 2 6			
Longitudinal Drive Unit		Dual Drive (Rack/Pinion)	
Transverse Drive Unit		Main Carriage Drive (Rack/Pinion)	
Longitudinal Rail Span		3000 ~ 4000	3500 ~ 4000
Effective Cutting Width (without Belt-type Ducting)		2100 ~ 3100	2500 ~ 3000
Effective Cutting Width (with Belt-type Ducting)		1800 ~ 2800	X
Max. Longitudinal Rail Length		15000	
Effective Cutting Length		Rail Length -1750	Rail Length -1800
Longitudinal Rail Size		22kg/m (@3m unit) 1	T-type (@5m unit) 5
Longitudinal Rail Rack Size		CP-5 1 5	
Main Specification			
Max. Drive Speed		12m/min	10m/min
Max. Cut Speed		6m/min	
Marking Speed		10m/min	X
CNC Model		KOIKE D430 9	
Position of Operation Panel		Left / Right (option)	Left
Power Supply for Machine		1-Ph. AC220V, 50/60Hz	
Painting Color (Machine body)		R4/14 (Red)	
Gas Cutting Base 3 7			
Fuel Gas		LPG / Acetylene	
Gas Control Panel		○	X
Max. Cutting Thickness Capacity / single torch		100 mm	
Max. No. of Torch Carriage		4 sets	2 sets
Max. No. of Gas Torch w/ 1 Plasma		3G + 1P	1G + 1P
Motorized Torch Riser Type (Torch Lifter)		KET HDH-type (DC24V) 4	Light-type (DC24V) 8
Min. Gas Torch Distance		160	165
Air Plasma Option Base OP			
Air Plasma System Conventional Air Plasma (NO High Frequency-type)		(ie.) Powermax-45, -85, -105, and -125 10	
Cutting Shape		I-cut	
Plasma Torch Initial Height Sensor		Physical contact of Plasma torch, being pressed against steel plate surface.	
Plasma Torch Height Control		Arc Voltage Control System	
Plasma Torch Block Shield Curtain		OP	X
Anti spatter spray		X	
Gas Cutting Option			
Torch Selection - I (Individual Solenoid Valve for JOX)		○	
Torch Selection - II (Individual Solenoid Valve for POX, FG, Ignitor)		○	X
Auto Igniter (Type- I)		OP	OP
Auto Igniter (Type- III)		OP	X
Water Spray Unit		OP (Solenoid valve)	OP (Manual valve)
Water Spray Unit (L-size Ring Type w/ Solenoid valve) (for combination use with Capacitance H. Sensor)		OP (Solenoid valve)	OP (Manual valve)
Capacitance Height Control (KET CHC type @Max. t25mm)		OP	X
Hi-Low Adjuster (for Gas control box)		OP	OP
Automatic Piercing Function (for Gas control box)		OP	X
Quick Torch		OP	X
Twin Torch Attachment		OP	OP
Bevel Cutting Attachment		OP	OP
Torch Forward/Backward Adjuster		OP	X
Bevel Torch Block (3 torches/ set) (Model: SP-400 Type)		OP	X
Mirror Image Cutting Function (by changing steel belt clamp position)		X	
Scrap Cutting Torch (w/ 10m long twin hose)		OP	X
Line Marking Option (White Zinc Powder)		OP	X
Plasma Fume Collector Option		OP	X